

## UPCOMING SHOW

*Up to 25 works on show*  
March 11-25, 2010  
Bonner David Galleries  
7040 E. Main Street  
Scottsdale, AZ 85251  
(480) 941-8500

• SHOW LOCATION SCOTTSDALE, AZ



# GAIL MORRIS

## New horizons

Last year California landscape painter Gail Morris traveled over 100,000 miles, visiting countries like Sweden, Holland, Fiji and Japan. These excursions have heavily influenced her latest body of work, which will be featured in her annual spring show at Bonner David Galleries in Scottsdale. Titled *New Horizons*, the show encompasses scenes of rural hayfields in Sweden to Holland's vast green grass and waterways, as well as locations in California and New Mexico.

In this grouping of landscapes and skiescapes, Morris explores various points of view.

"Instead of just painting from the perspective of someone who is standing in the landscape, I am making use of the various scenes that I saw while traveling by small plane or by boat," she says. "I am also doing a series of stormy skies as seen from the perspective of someone swimming in the ocean that is looking across the water at an approaching squall. So I am trying to take a fresh look at the landscape and continue to present it in its pristine form, without any man-made structures or encumbrances."

In addition to altering the perspective of her rural landscapes, Morris is also pumping up the colors by using more saturation and complementary colors that vibrate.

"It is always a balancing act between realism and artistic license when it comes to color," the artist says.

Everything Morris paints is based on an identifiable place, often beginning with a plein air painting or pastel.

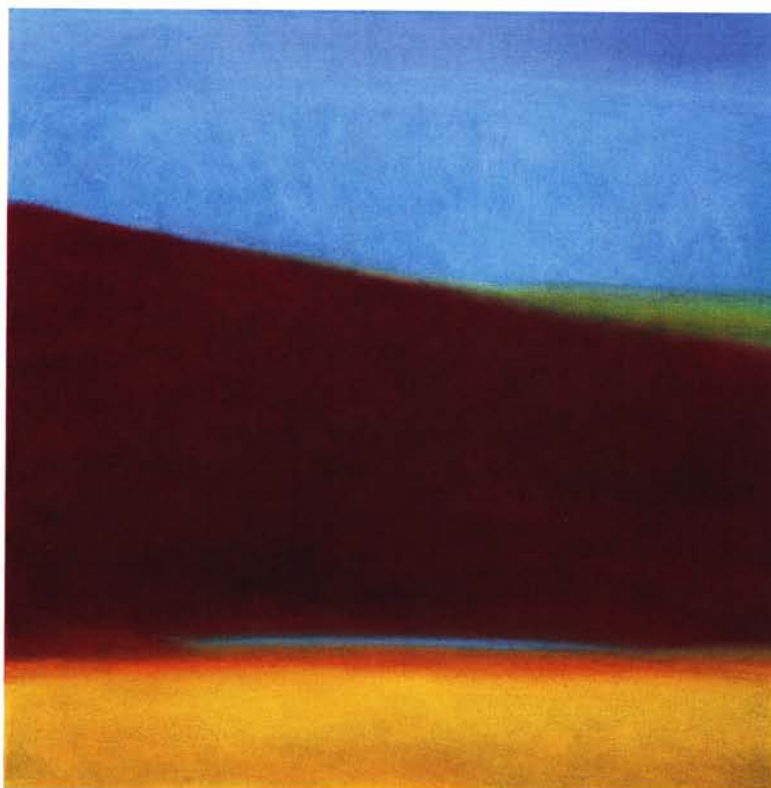
"But many times it will become more simplified as I work on a larger composition," adds Morris. "This year, the museums that I visited and the art materials that I purchased in Japan had a great influence on my current work."

Morris became particularly taken with the 20<sup>th</sup>-century style of Shin Hanga woodblock prints that were done around 1890 to 1950, 75 percent which depicted rural landscapes.

"I am drawn to their use of large blocks of flat color and their desire to show nature in its most pristine form," says Morris. "I have always eliminated man-made structures from my paintings, so I relate to this, and I am just taking it a bit further in my current work. Again, balancing realism with abstraction." •



BLACKBIRD SINGS, OIL ON CANVAS, 30 X 40"



AUBURN, OIL ON CANVAS, 24 X 24"

For a direct link to the  
exhibiting gallery go to

[www.americanartcollector.com](http://www.americanartcollector.com)





SUNDOWN MISSION RANCH, OIL ON CANVAS, 36 X 36"

### Price Range Indicator

*Our at-a-glance Price Range Indicator shows what you can expect to pay for this artist's work.*

	Small	Medium	Large
2001	\$1,000	\$2,000	\$3,600
2008	\$2,400	\$5,400	\$11,000
2010	\$1,400-\$3,200	\$4,000-\$7,200	\$9,500-\$14,000

### *The Collector Says . . .*

**"In the many years I have collected paintings by Gail Morris, I have seen a range of work from pieces informed by the California landscape movement to color-field driven landscapes echoing the abstract expressionism of Rothko. In all of them, Gail distills the image to its fundamental components to evoke the essence and grandeur of the natural landscape."**

*— James Kennedy, Executive Vice President,  
Pixar Animation Studios*